

For Lease

North Ridge Medical Office Space

3460 N. Ridge Rd. Suite 120 | Wichita, KS

LEASE INFORMATION

Rentable Space

3,194 SF

Lease Rate

\$12.50/SF

Lease Type

NNN

**Excellent
Co-Tenants!**



CONTACT INFORMATION

Dan Unruh, CCIM

(316) 618-1100

danunruh@insitere.com

InSite Real Estate Group
608 W. Douglas, Suite 106
Wichita, KS 67203

- > Located in the rapidly growing North Ridge Rd. corridor near K-96
- > 2 procedure rooms, 4-6 exam rooms, patient and staff restrooms
- > Waiting and sub-waiting areas for up to 32 people
- > Class "A" medical office design with spacious layout
- > Front and rear parking available

Like/Follow us!
  

InSite
REAL • ESTATE • GROUP

For Lease

North Ridge Medical Office Space

3460 N. Ridge Rd. Suite 120 | Wichita, KS

LEASE INFORMATION

Rentable Space

3,194 SF

Lease Rate

\$12.50/SF

Lease Type

NNN

**Excellent
Co-Tenants!**

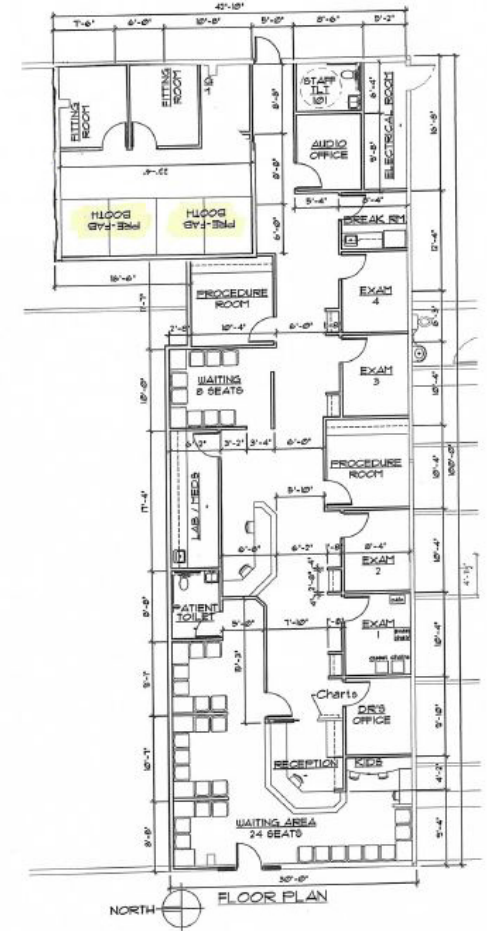
CONTACT INFORMATION

Dan Unruh, CCIM

(316) 618-1100

danunruh@insitere.com

InSite Real Estate Group
608 W. Douglas, Suite 106
Wichita, KS 67203



AREA STATISTICS

Traffic Count:

17,500

Population Within 3 Miles:

38,027

Median Household Income:

\$85,367

Average Household Spending On Healthcare:

\$6,795

Like/Follow us!



InSite

REAL • ESTATE • GROUP